

# Practicle Examples of Data Use

Ed Kingsley

Principal Housing Officer (Energy Efficiency)

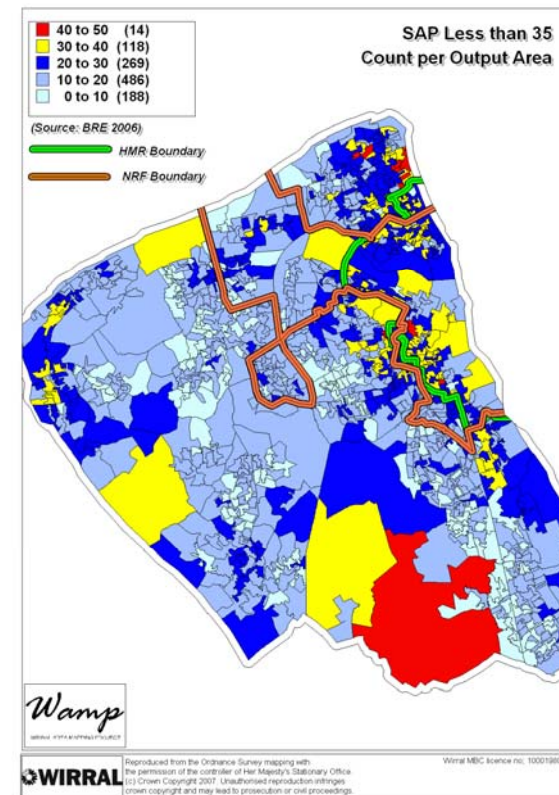
Wirral Council

NWDEA Conference March 2007



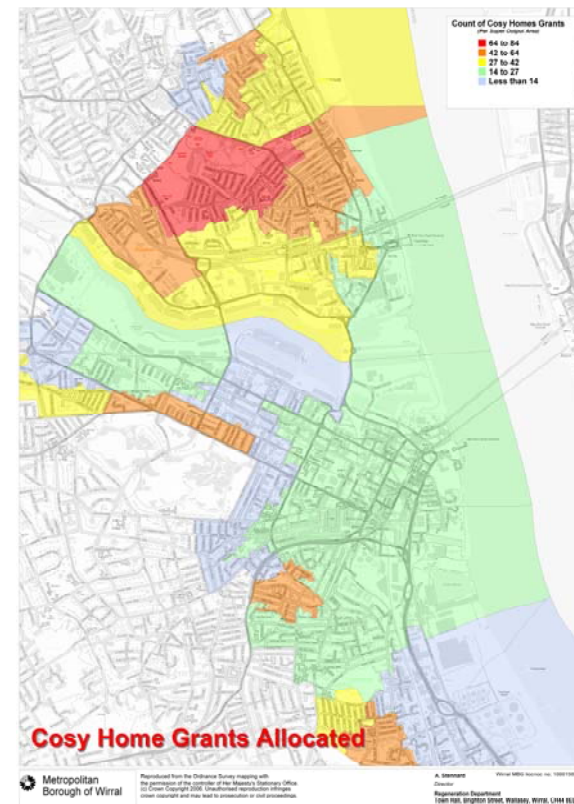
## What data have we used in our work?

- Re-interrogation of Stock Condition Survey
  - *Estimation of number of properties within output areas with a SAP rating below 35*
  - *Energy efficiency promotional mail shot to the areas showing highest number of properties with a SAP rating below 35*



## What data have we used in our work?

- Homes having had measures installed under a local insulation initiative
  - Areas of low take-up identified
  - Mailshot to homes where no measures previously installed in these areas
  - Will incorporate Warm Front and HEED data in future



## Other data sources influencing our future direction

- Wirral Primary Care Trust providing Excess Winter Death figures to Ward level.
  - Overlay with SAP info from stock condition survey to use for targeting work and possible funding bid.*
- EEAC began collecting Decent Homes Standard information in 2006 on the smaller initiatives they manage for us.
  - *How has the intervention affected Decency levels? Useful for funding partners and long-term sustainability of initiatives.*
- Neighbourhood Wardens to use information from Fuel Poverty Targeting Toolkit to target door-knocking exercise which will promote affordable warmth schemes



## Summary

- Plenty of available data – EEAC, HEED, Census, English House Condition Survey, Mapping Projects
- Effective use of resources, demonstrates value for money
- No need for 100% perfect data – use whatever you can get
- Invaluable for demonstrating the need for new initiatives or showing the success of existing schemes