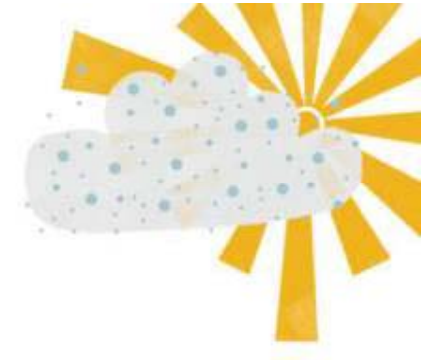


# FOUNDATION

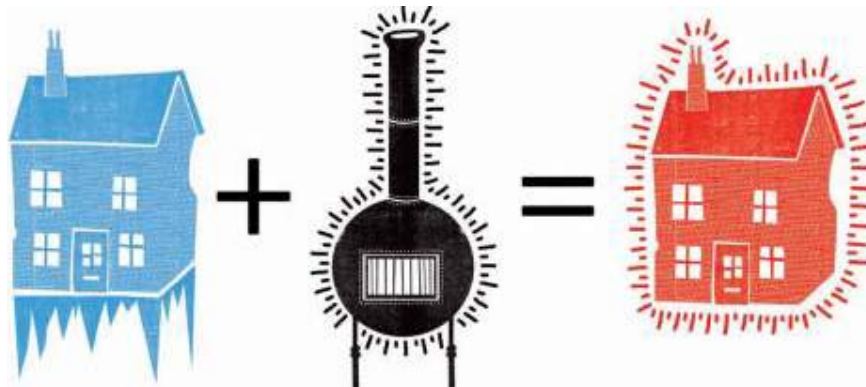
a climate fund for the Northwest



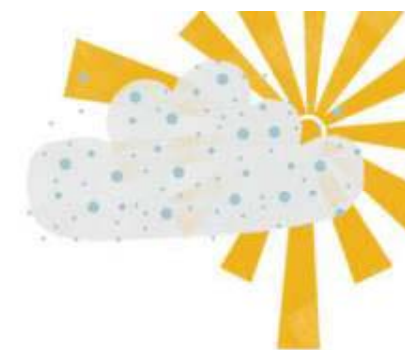


**Small projects....**

**BIG changes**

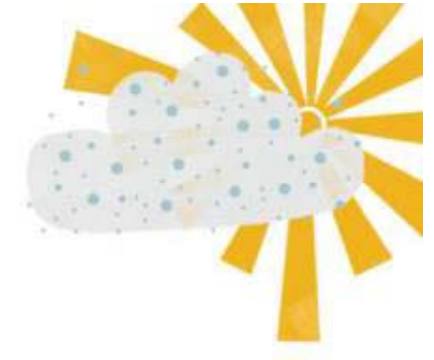


**FOUNDATION**



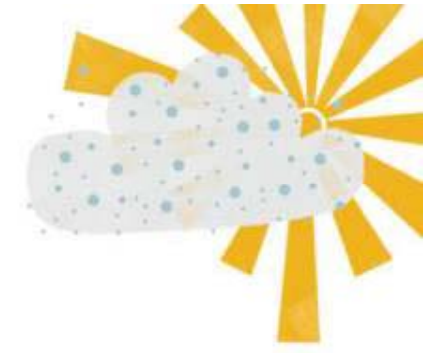
## Energy Efficiency

**FOUNDATION**



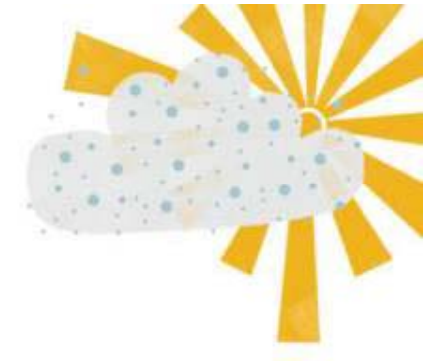
## Renewable Energy

**FOUNDATION**



## Behaviour Change

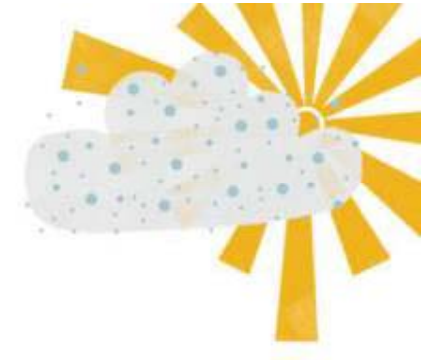
**FOUNDATION**



## Carbon Sequestration

**FOUNDATION**

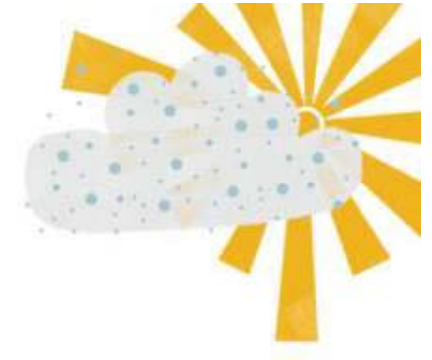
# Who Can Apply?



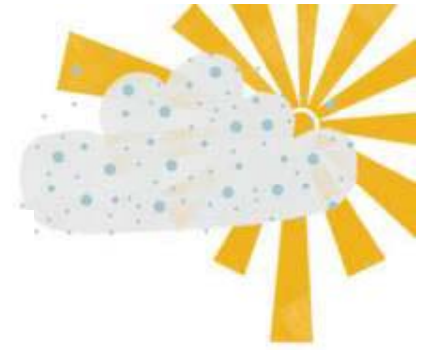
- Public sector
- Registered charities
- Constituted community groups
- Not-for-profit organisations

**FOUNDATION**

# Fund Criteria



- Located in NW region
- ***ADDITIONAL*** CO<sub>2</sub> savings
- Should provide value for money: £ per tonne CO<sub>2</sub>
- Provide social/economic benefit
- £50,000 max, match funding not always required



dosh



**FOUNDATION**

# Thank you

[www.climatefund.org.uk](http://www.climatefund.org.uk)

[www.twitter.com/FoundationNW](https://www.twitter.com/FoundationNW)

**FOUNDATION**



# Green Loans for Homes



BLACKPOOL FYLDE & WYRE  
**CREDIT UNION**



# Why a Credit Union?

- A Credit Union is local, not-for-profit financial services organisation
- Based on ethical values, local people helping themselves and each other in a co-operative.
- It is owned and run by its members, for its members.
- One of its aims is to “promote thrift” and provide information to its members on saving money.
- It offers savings accounts and loans
- Life insurance is provided at no cost
- There are no set-up fees, arrangement fees or early repayment penalties.
- Its Board of Directors are unpaid volunteers
- Any profits generated are returned to the members



# Project Background

- Credit Unions need Capital
- Often rely on grant funding in early years.
- Always seeking funding that fits in with its main aims



# Project Background

- Rising energy prices
- Economic Downturn
- CU aim to help members save money.
- Identifying funders whose needs complement the Credit Union's needs.



# Synergy

- Foundation needs to fund initiatives that will bring carbon reduction.
- Needs to get the most out of its money.
- How can the CU meet its aims AND the funder's aims?



# Putting together the bid

- Research
- How will Credit Union benefit?
- How will funder benefit?
- Who else will benefit and how?
- How long will the project run?
- How will it be delivered?
- What skills are available for delivery?
- What are the outcomes? How will we measure them?



# The Project

- Green loans for homes
- Interest free loans to enable employees to carry out energy efficiency measures at lower cost.
- Encourages people to have work done now that they may otherwise put off.
- Saves them money on interest on loan
- Saves money on fuel bills into the future
- Reduces carbon emissions



# And then....

- Does it all again!
- Added value
- Loans capital used for carbon reduction measures then recycled to be used for the same again.



# Square Pegs & Round Holes

- Ensure funding can do what you want it to do.
- Ensure what you want to do is what the funder wants.
- Be aware of criteria – a good idea doesn't mean the funder can fund it.
- Many funding bids involve trying to make square pegs fit round holes.
- Identify where your work complements the work of the funder.





**Thank you for listening**